

# light

MIDDLE EAST

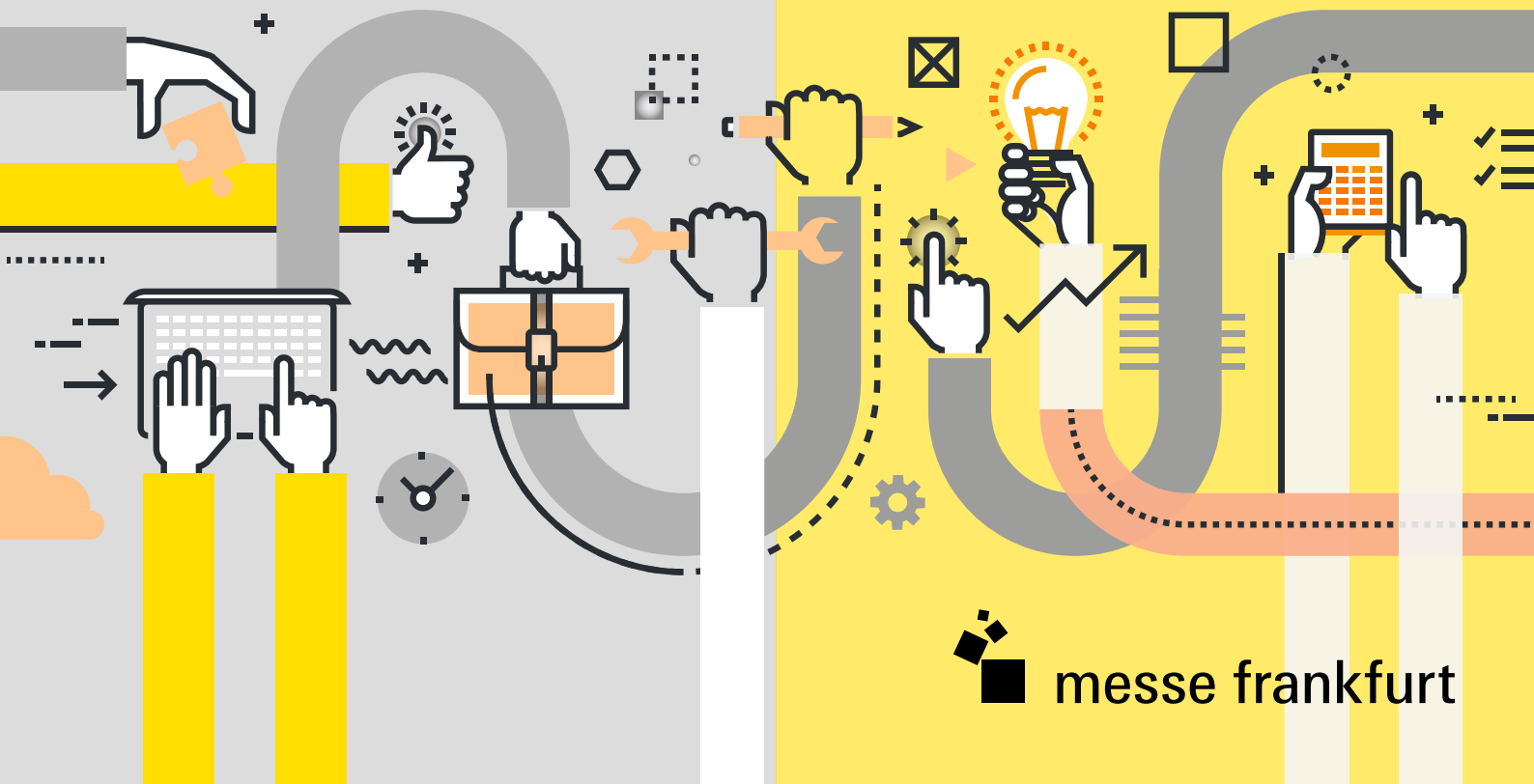
23 – 25 September 2018

Dubai, United Arab Emirates

[www.lightME.net](http://www.lightME.net)

# Make the most of your visit

through Business Matchmaking



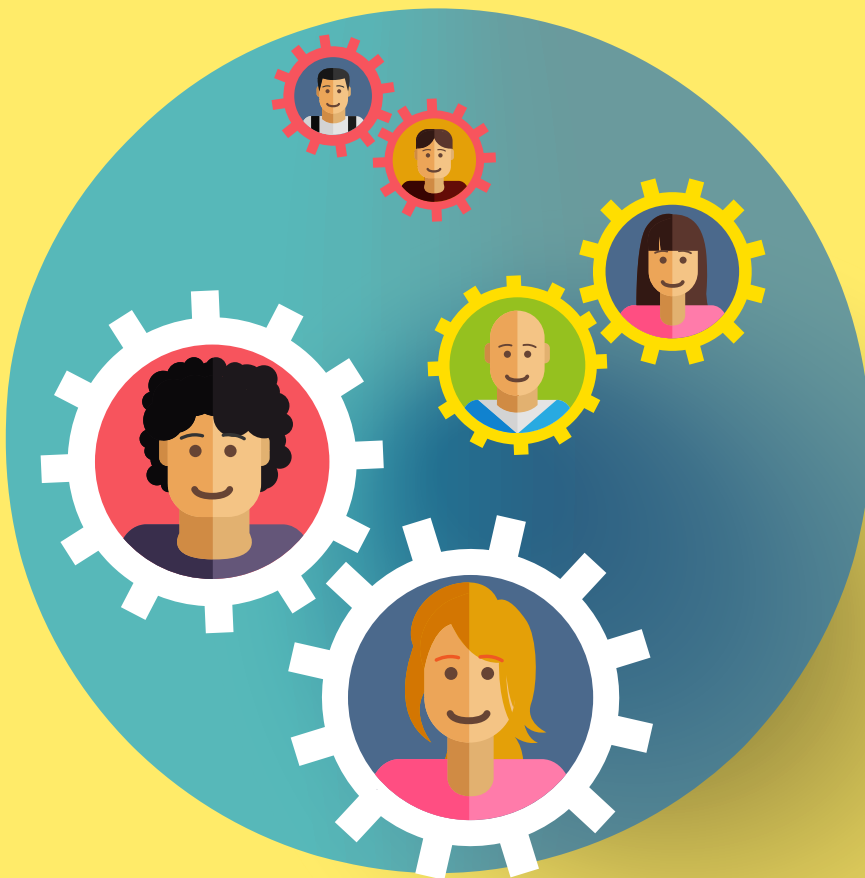
# Making the right match

Introduced with the aim of facilitating business connections between exhibitors and visitors, the Business Matchmaking Program is a vital tool for exhibitors and visitors pre-show, which allows them to efficiently set their meeting agendas for maximum benefit – it's about meeting the right people in the right place at the right time.



# Automatic Matchmaking

As a pre-registered visitor, you are automatically enrolled into the Business Matchmaking Program. Following the completion of your online Visitor Registration Form, our Business Matchmaking Team will send you a separate email with your login credentials to access the Business Matchmaking Program. The program will provide a personalised report, listing out all relevant exhibiting companies at the show with similar business interests, in order to schedule meetings with them.



In case you didn't register online as a visitor, please [\*\*click here\*\*](#)

# Scheduling Meetings

Time at the exhibition is precious. Exhibitors will be engaged by many promising visitors at their stand. In the case of visitors, the scale of the show presents numerous promising opportunities that may not be capitalised upon due to the limitation of time.

However, by pre-scheduling meetings, you can optimise your time and plan your day by allocating specific time slots to the people who matter most to your business.



# Specific Filtering

The Business Matchmaking Program provides you with a range of filters such as company name, personnel name, country, industry and designation as well as keywords and participating category, allowing you to search, identify and connect with the participants that you wish to meet at the exhibition, in a more precise manner.



# Real-time Tracking Diary

View your pre-planned schedule of meetings with real-time updates in terms of accepted meetings, cancellations or alterations to timings.

What's more, exhibitors who wish to set up meetings with you will be able to select a time slot based on your availability, which is clearly visible in your diary.



# Scheduling Mini-workshops

The ability to schedule mini-workshops is a valuable feature of the program. It allows you to invite a group of exhibitors who share similar business interests for a discussion, share expertise and do a whole lot more to benefit your business. Interested participants will be aware of your workshop and can choose to opt in if they wish.



# Business Matchmaking Team Assistance

Our dedicated Business Matchmaking Team are on hand to assist and guide you on how to make the most of the program, while also carrying out follow-ups on scheduled meetings, ensuring that you make the most of the exhibition.



For more information, e-mail our Business Matchmaking Team at [info@bizmatchmaking.net](mailto:info@bizmatchmaking.net)